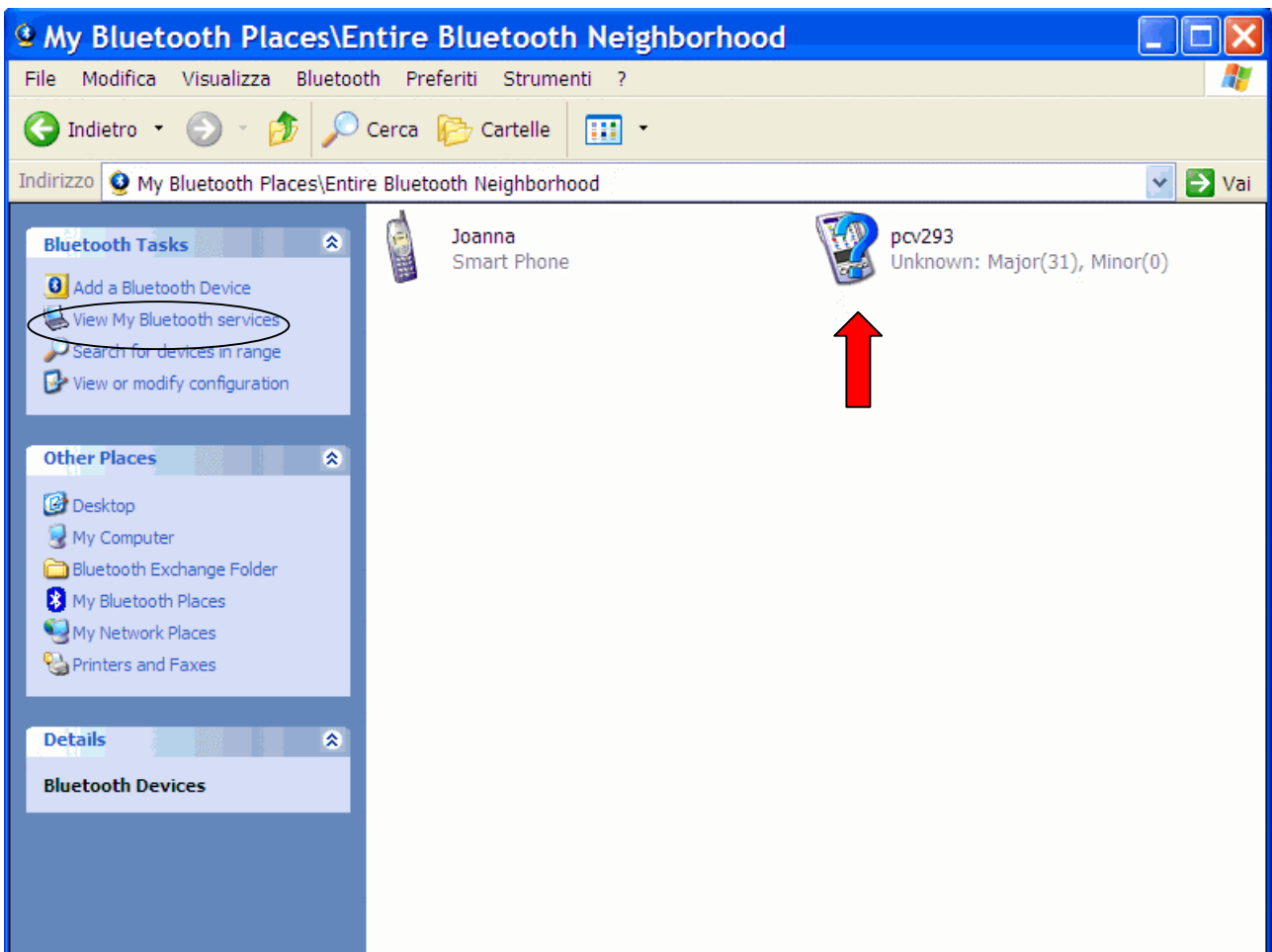


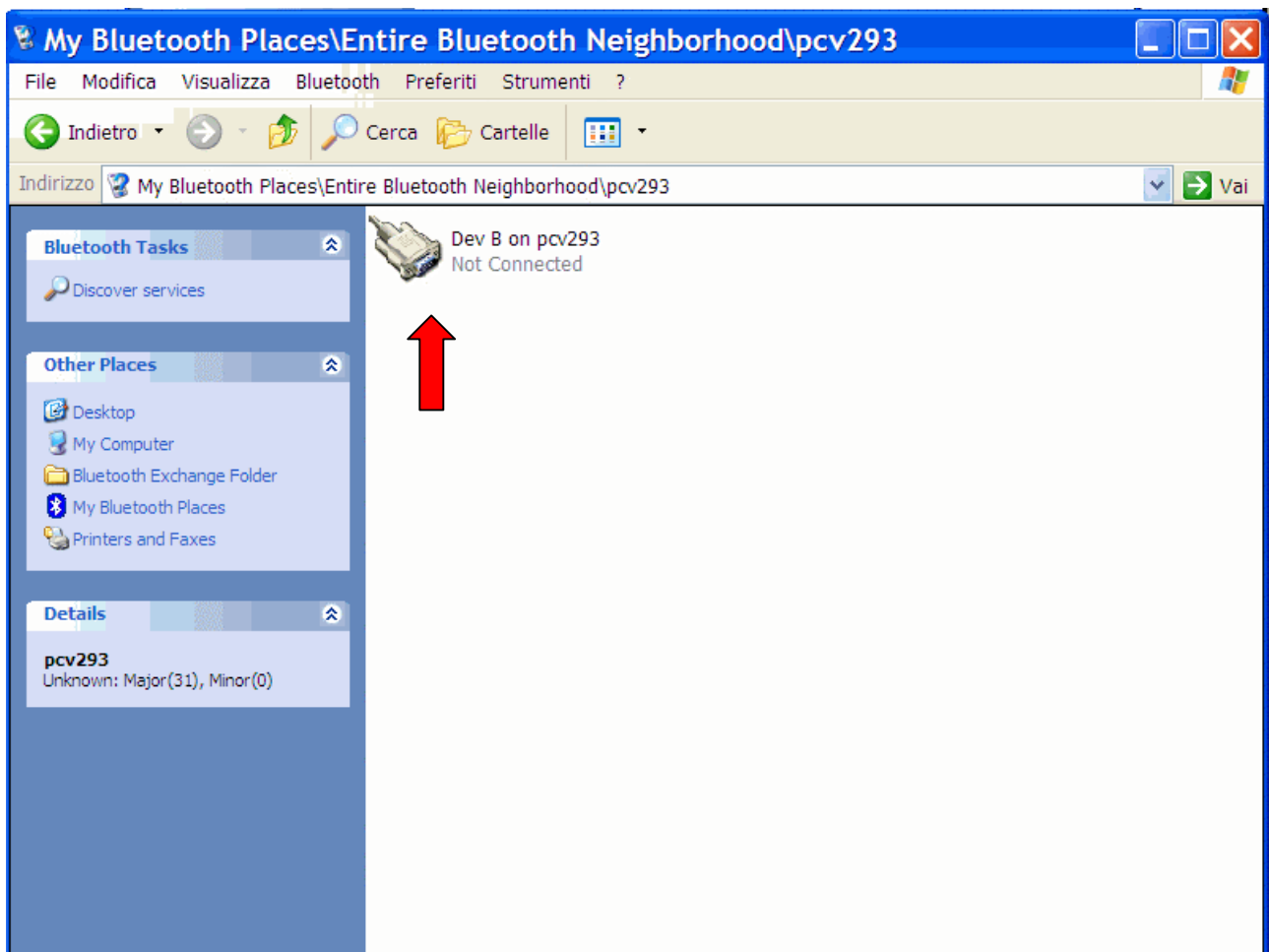
The miniVNA PRO has an integrated class 1 bluetooth module, the module acts as a virtual COM port. To operate with bluetooth the miniVNA Pro needs to be unconnect from the USB cable and the battery switch to ON position, the blue led should be flashing when the module is in discoverable status.

1. First time the bluetooth is used you need to pair the new device with the PC, do the paring like a normal phone using the bluetooth manager (My Bluetooth Places) of your PC (screen shots example refer to Windows XP computer).

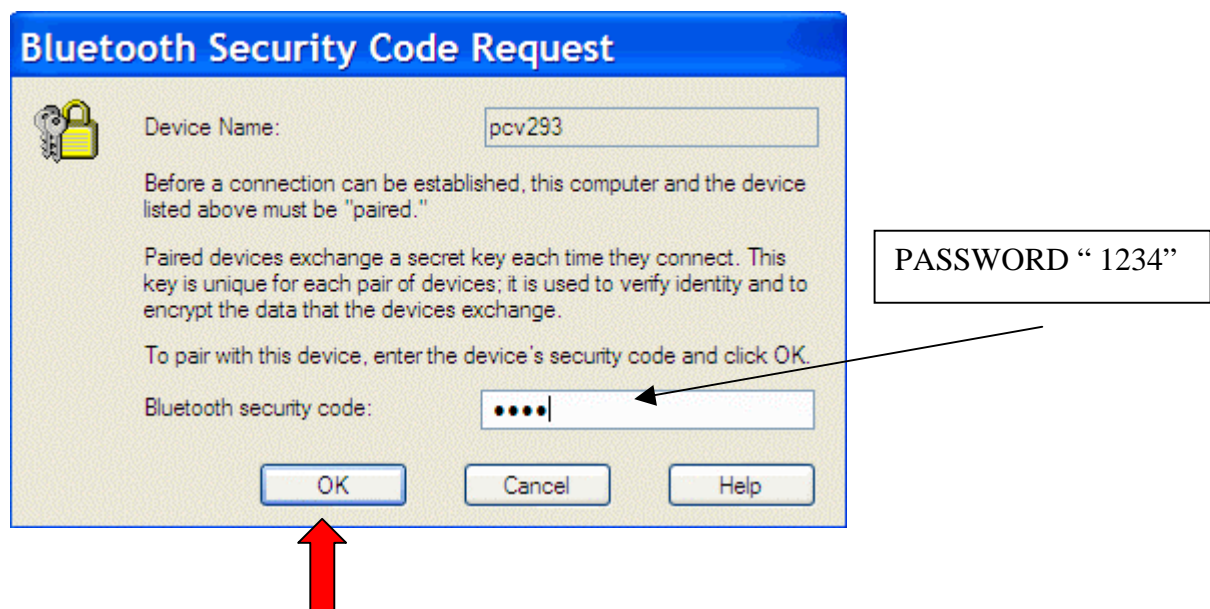


2. Search for the devices in the range, after few second your miniVNA Serial number will appear in the list (in the example PCV293), before searching your miniVNA make sure the blue led on the hardware is flashing (if not do as follow, disconnect USB cable, switch ON the battery and push for a while the Func button, (remember the battery needs to be connected internally at the first installation, see the hardware guide attached).

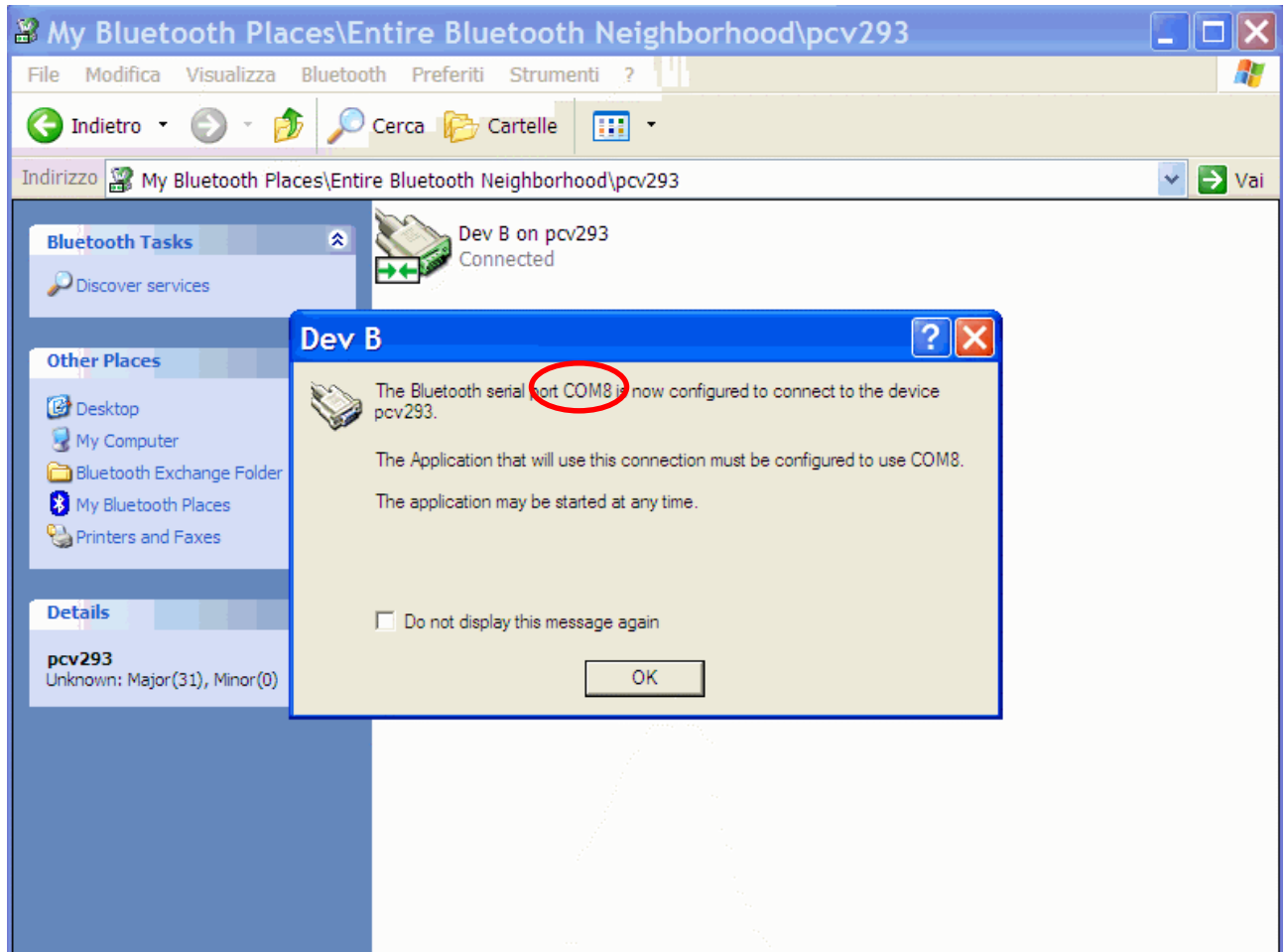
3. Now double click on the discovered miniVNA, a serial cable Dev B will be available. See picture below.



4. Click on the Dev B icon and the system will ask for the default password "1234".



- In case the pairing is successful the bluetooth icon on the PC change to green status and the blue led will stop flashing remaining continuously ON.



- Note the COM port to be used later in the software setup communication port (in the example COM8).